

# Importing and Saving video with Windows Live Movie Maker for use in TaskStream

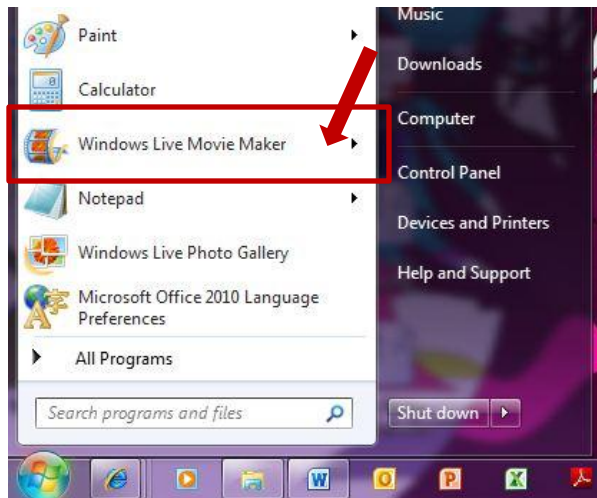
**Important Note: Please locate the program in your computer called "Windows Live Movie Maker" NOT "~~Windows DVD Maker~~"**

The following is a brief tutorial on how to take a video created with a Flip camera (or other AVI file) and process it to be uploaded into TaskStream. These general concepts can also be applied to other video editing programs.

## Processing video using Windows Live Movie Maker:

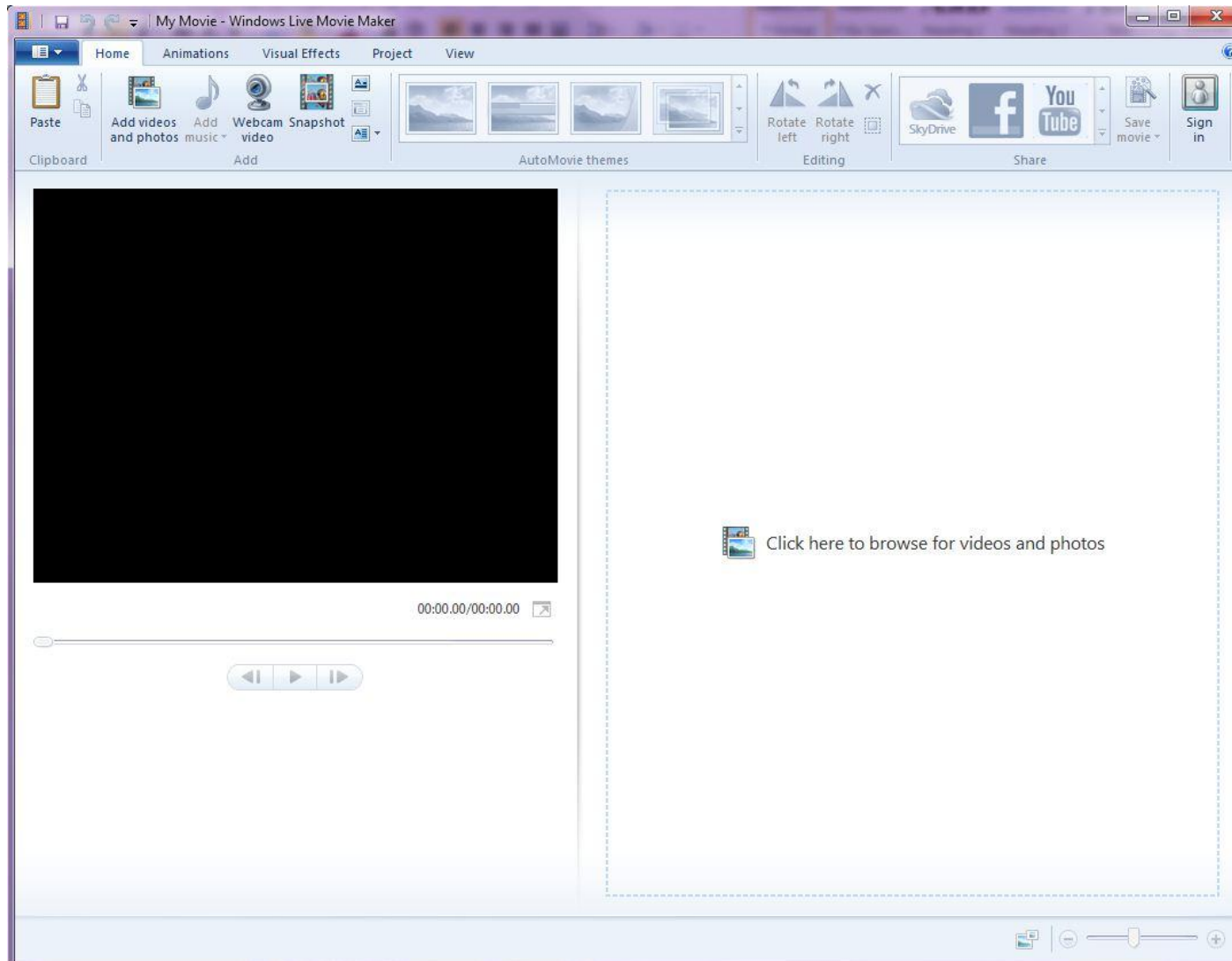
NOTE: if you're using video from a Flip camera, you need to first install the Flip Codec so Windows Movie Maker can use the Flip video files. See: [How do I use a "Flip" camcorder?](#)

1. **Copy or move the video to a location on your desktop computer. "My Videos" within your "My Documents" folder is a good place.**
2. **Start Windows Movie Maker**



*Continued on next page.*

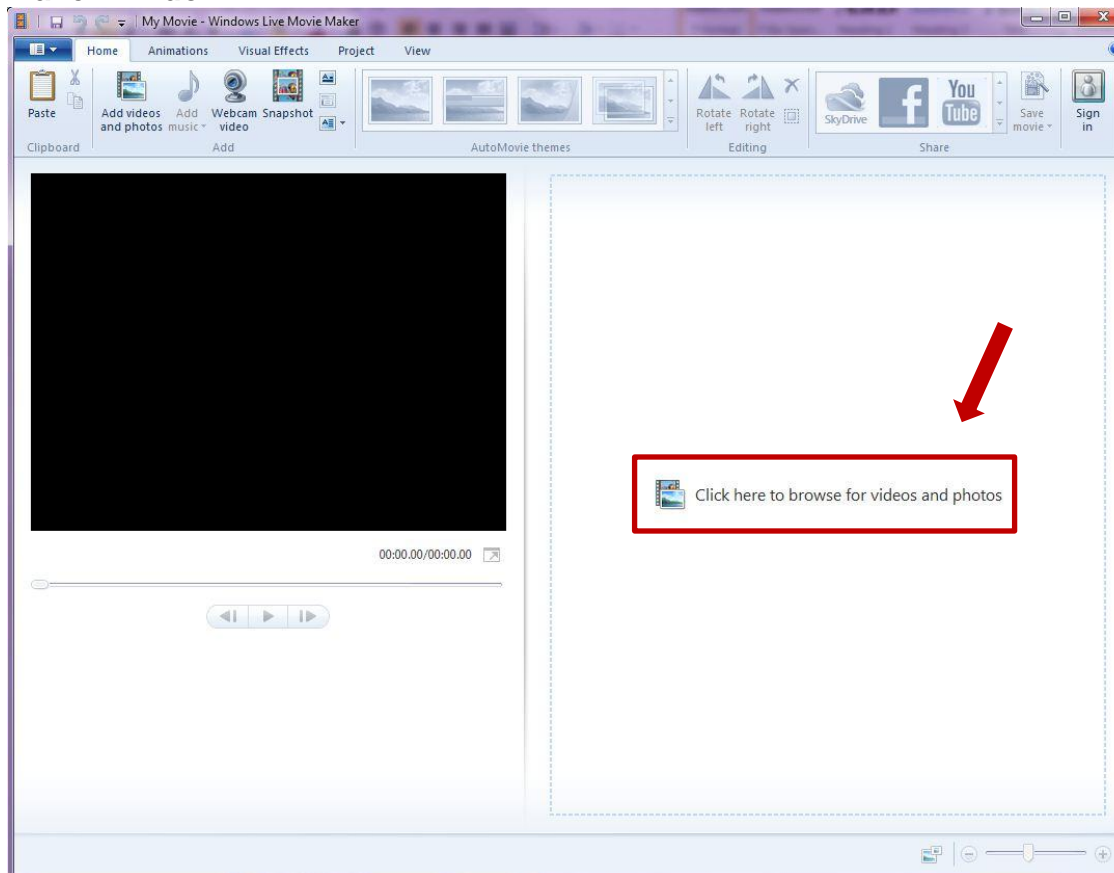
3. The Windows Live Movie Maker window looks like this:



*Continued on next page.*

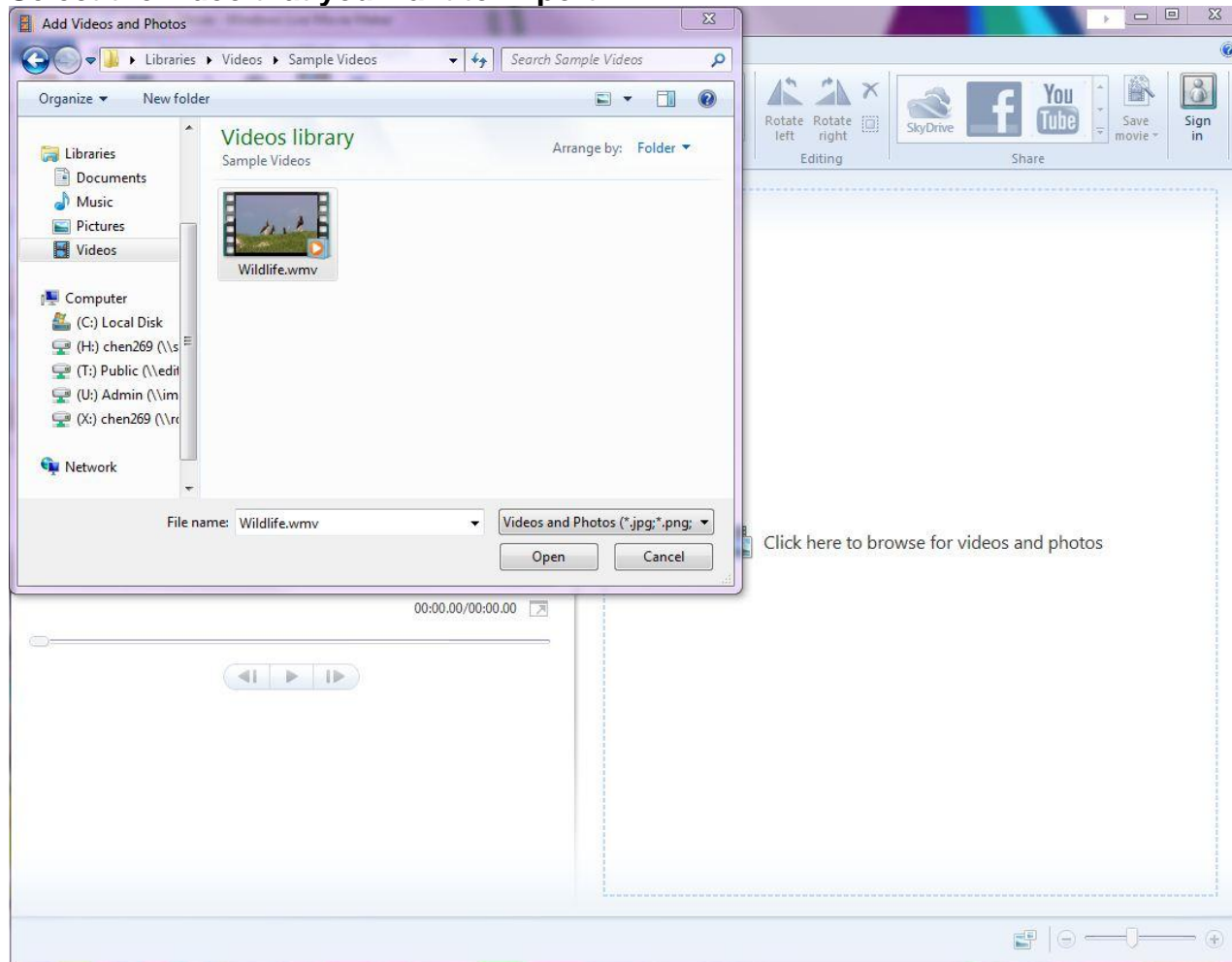
4. Import the video file into Windows Live Movie Maker

- Go to "Click here to browse for videos and photos" on the right side of the Windows Live Movie Maker window

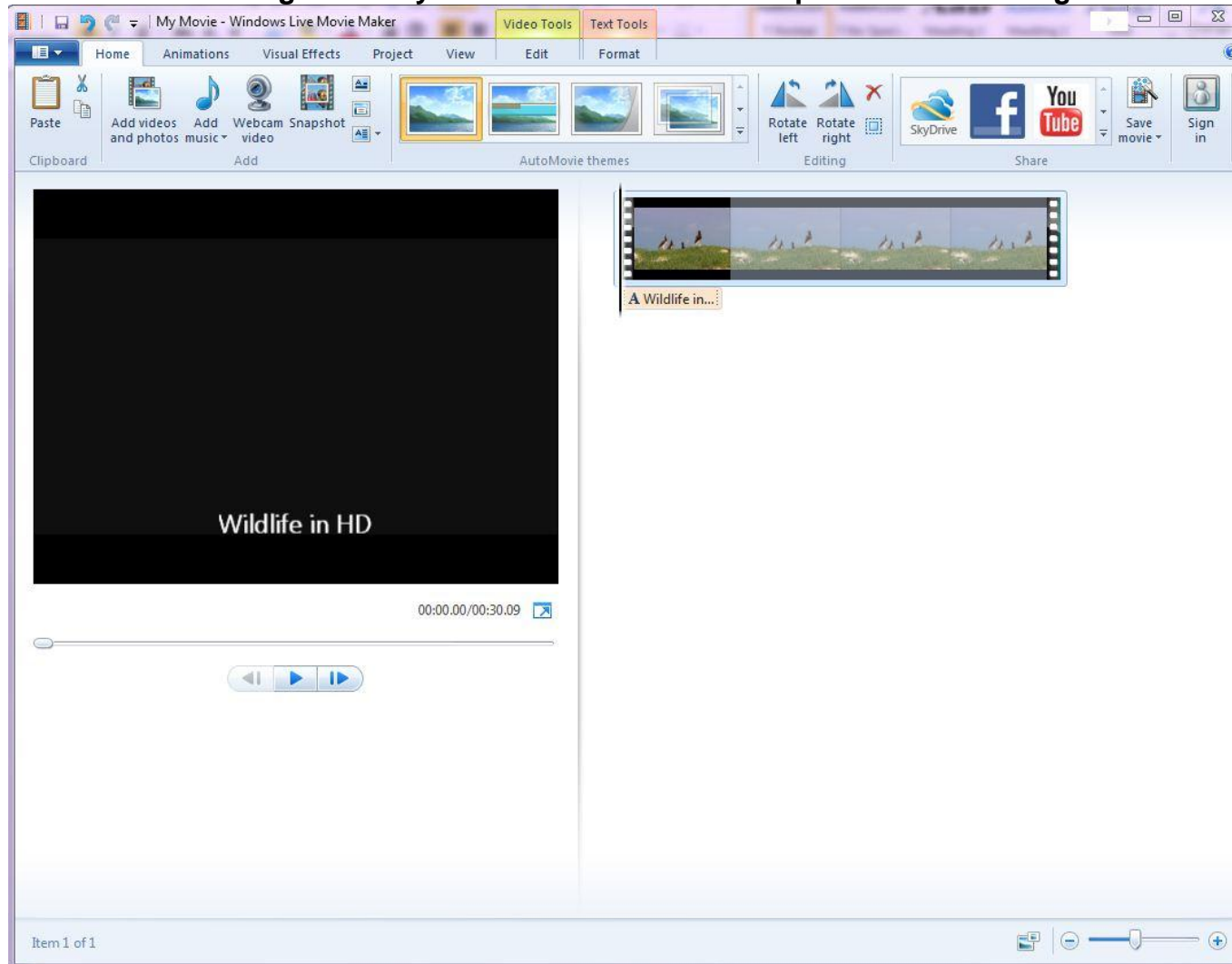


*Continued on next page.*

- **Select the video that you want to import:**



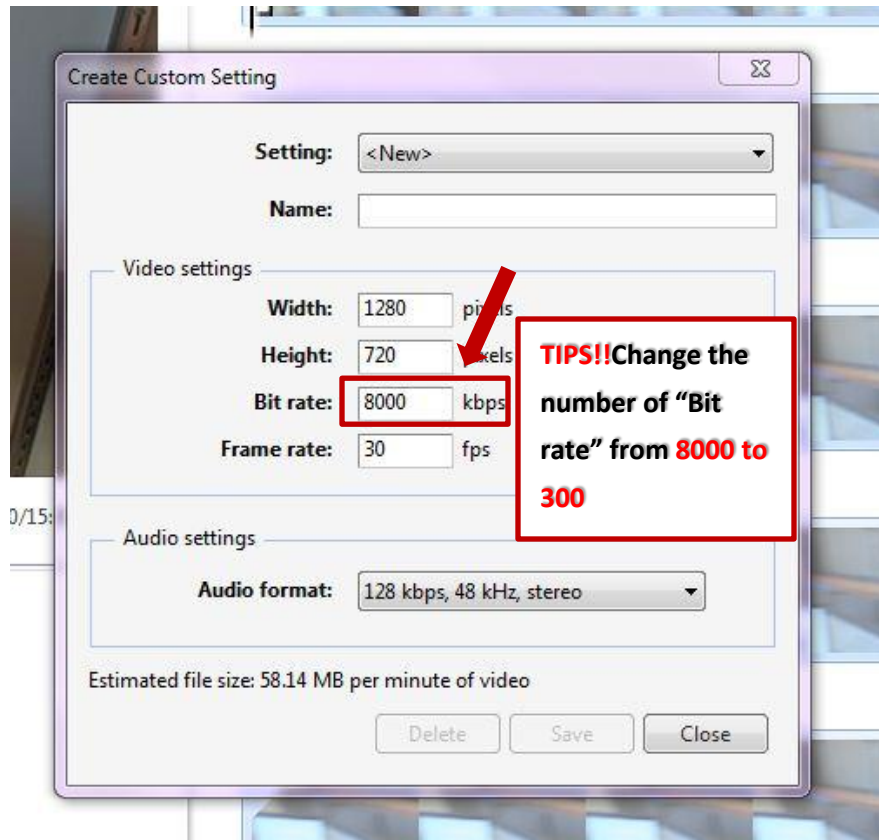
- **Video will be loading the and you will see one or more clips loaded on the right window.**



*Continued on next page.*

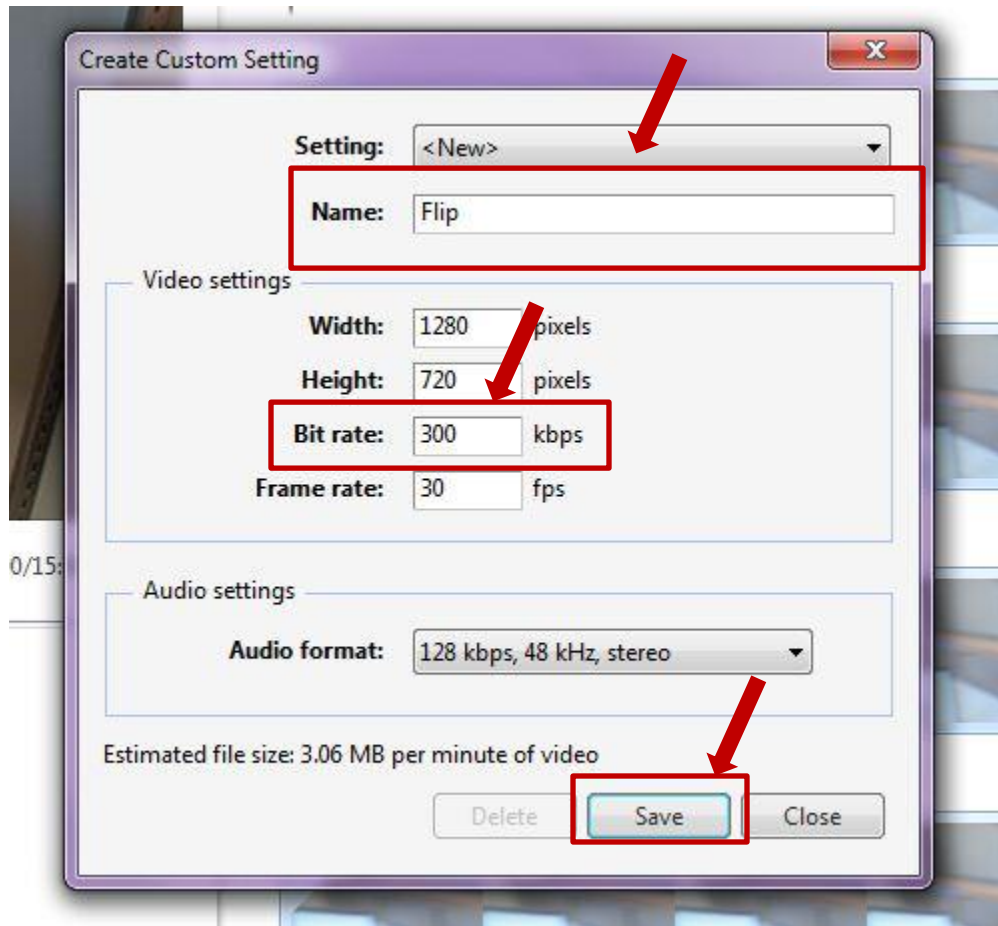


- Change the number of “Bit rate” from 8000 to 300.



Continued on next page.

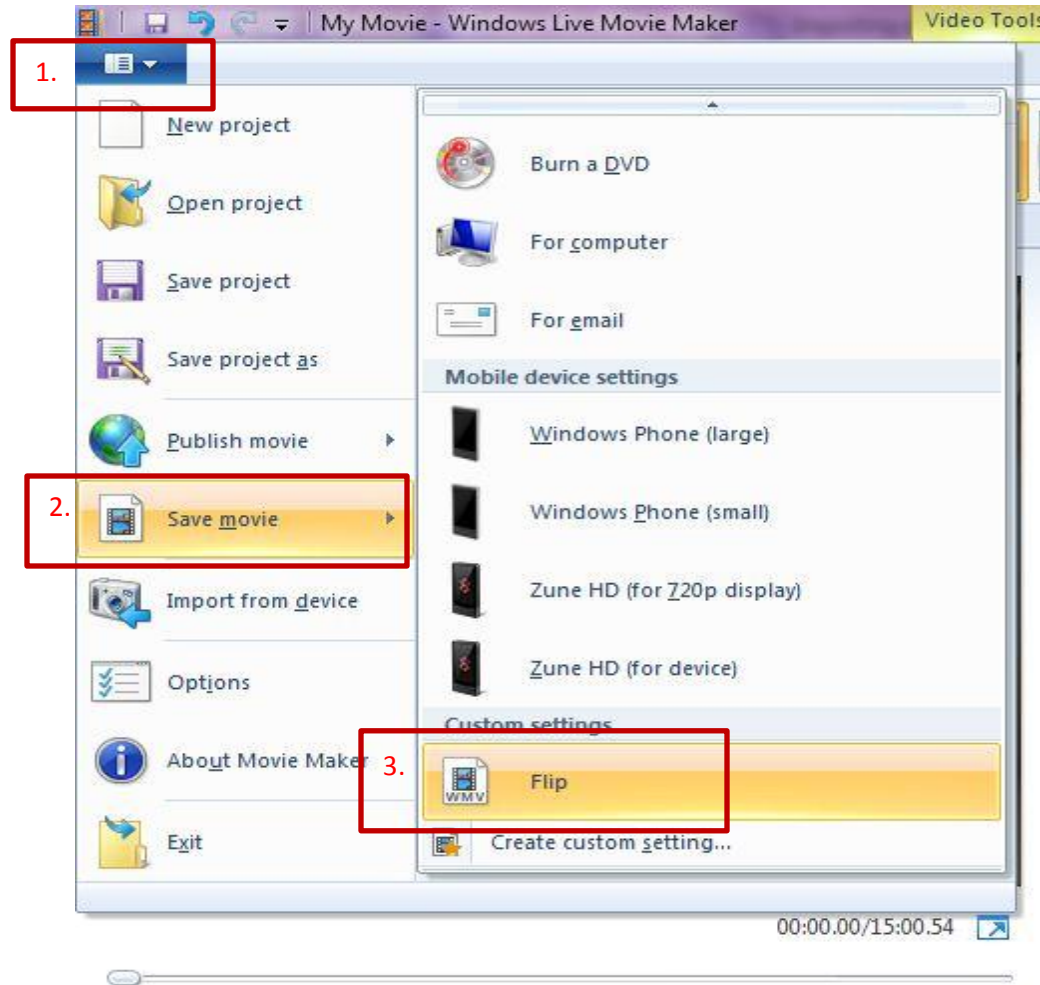
- Give a name to the new setting as “Flip” and change the Bit rate to “300” and click “Save”



*Continued on next page.*

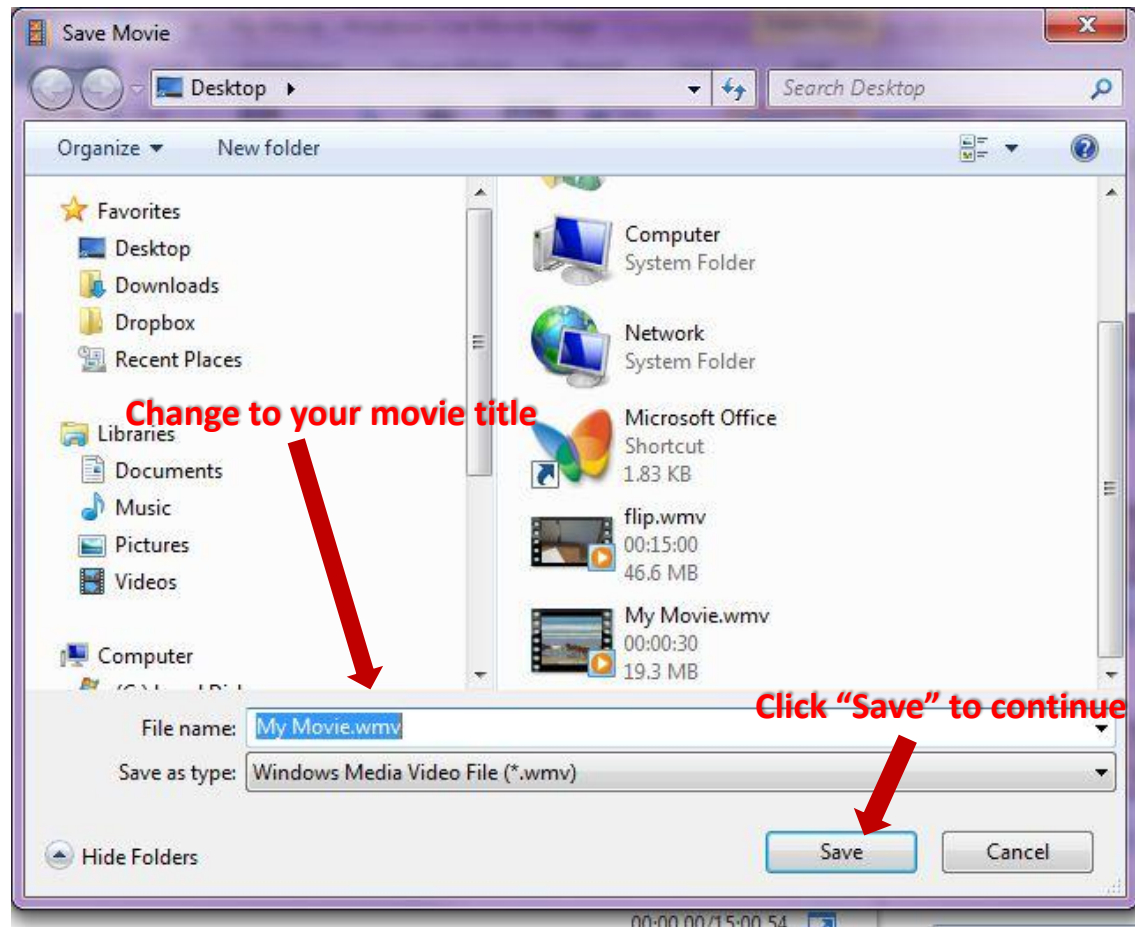


6. Again, click the top right button (1) and choose from the dropdown menu “Save movie” (2) and from the “Custom settings” please choose “Flip” (3) – the setting that you just created



*Continued on next page.*

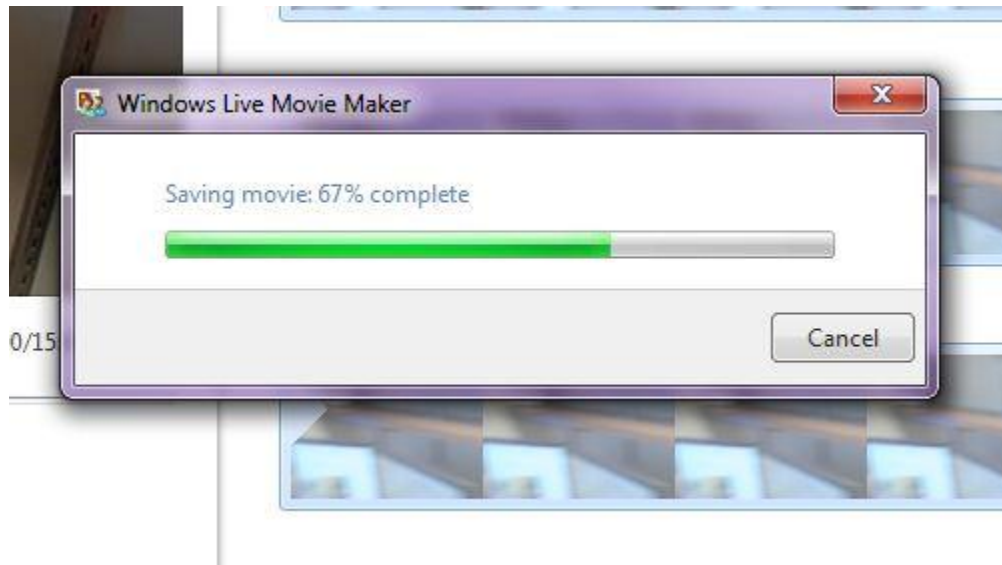
- **Type a name for your video:**



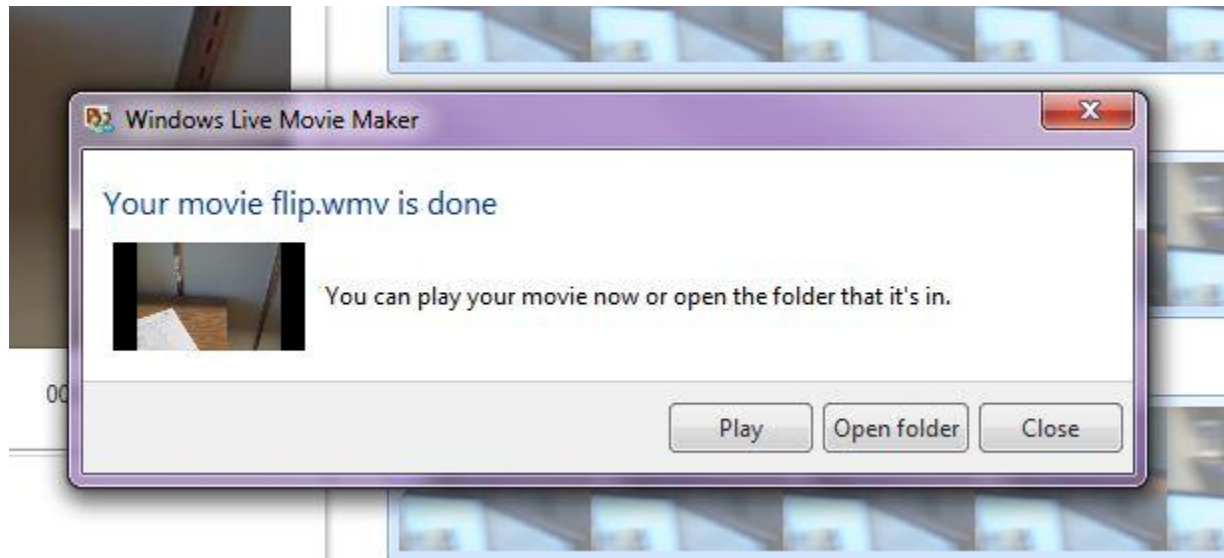
*Continued on next page.*

○

- Once you click "Save" the video will start to be created.




Once it is done, you can watch the video by clicking “Play” or “Open folder”.



### **Storing Your video in TaskStream:**

*Continued on next page.*

1. Once your video is saved you can Log into your TaskStream account to turn it in.




Home Products & Services Solutions

### Subscriber Login

**Username:**

**Password:**

[Forgot Password](#)  [Login](#)

---


[➤ Create or Renew Account](#)

[➤ Subscription Rates](#)

## Web-I

# Adv

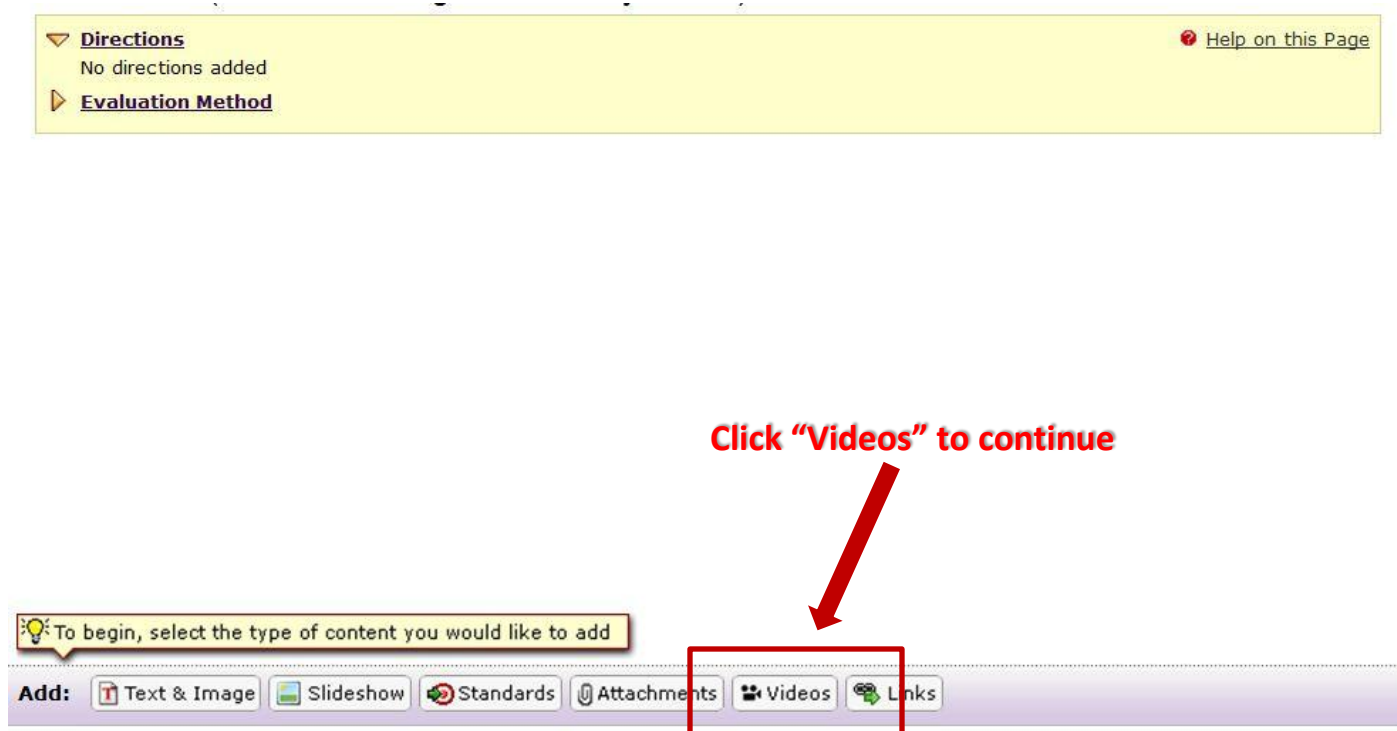
## Perform



We provi  
services  
process  
improver

Continued on next page.

2. Select the program and the assignment for which you want to upload the video.



The screenshot shows a web interface with a yellow header bar. On the left, there are two expandable sections: 'Directions' (with a downward arrow icon) and 'Evaluation Method' (with a rightward arrow icon). The 'Directions' section is currently expanded, showing 'No directions added'. On the right side of the header bar, there is a link that says 'Help on this Page' with a red question mark icon. Below the header bar, there is a large white area. At the bottom of the page, there is a horizontal bar with the word 'Add:' followed by several buttons: 'Text & Image', 'Slideshow', 'Standards', 'Attachments', 'Videos', and 'Links'. The 'Videos' button is highlighted with a red rectangular box. A red arrow points from the text 'Click "Videos" to continue' to the 'Videos' button. Above the 'Add:' bar, there is a light yellow tooltip with a lightbulb icon that says 'To begin, select the type of content you would like to add'.

**Directions**  
No directions added

**Evaluation Method**

[Help on this Page](#)

To begin, select the type of content you would like to add

**Add:** Text & Image Slideshow Standards Attachments **Videos** Links

Click "Videos" to continue

*Continued on next page.*

### 3. Attach the video to your artifact

► [Directions](#)  
► [Evaluation Method](#)

Cancel Save and Return

**Add New Video**

**Select File:**  
☒ A video saved on your computer  
 Browse...  
☐ Attach a previously uploaded video

**Name File:**

**Play Length:** (Optional)  
 minutes

**Description:** (Optional)

**Attach Standards:** (Optional)  
☐ Attach standards to this video  
Check Spelling Add File

No files have been attached yet.

Cancel Save and Return

**Browse and choose your video**

**Add the information for your video**

**Click "Save and Return" to finish**

Save and Return

If you have any questions, please contact EdIT at [edit@purdue.edu](mailto:edit@purdue.edu) and we will be happy to help.